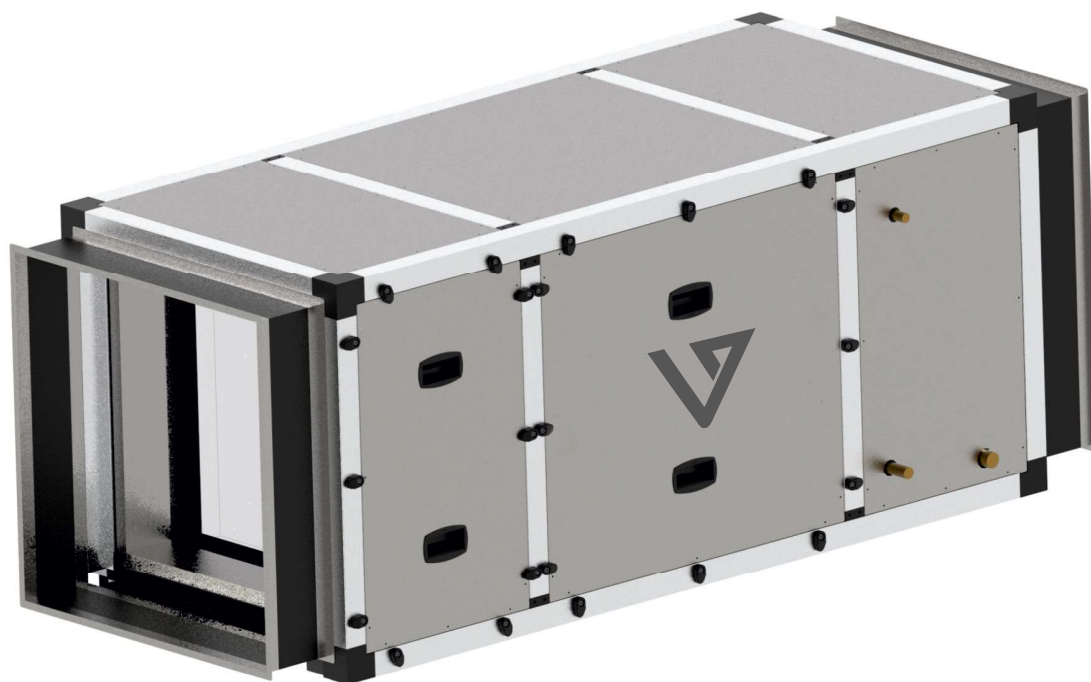
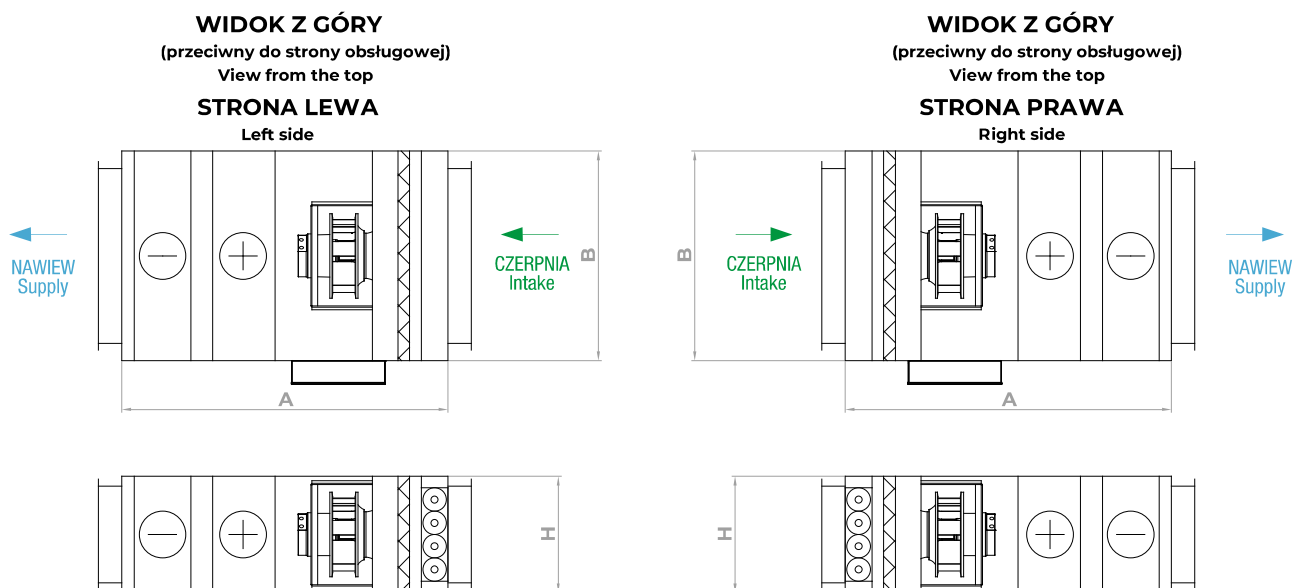


CENTRALE NAWIEWNE/ WYWIEWNE

SUPPLY/EXHAUST VENTILATION UNITS





| WIELKOŚĆ | KOD | PRZEPŁYW NOMINALNY | SPRĘŻ DYSPOZYCYJNY | WYMIARY | | | ROZMIAR KRÓĆCA |
|----------|---------|-----------------------|-----------------------|------------|-----------|-----------|----------------|
| Size | Code | Nominal output | Available pressure | Dimensions | | | Air duct size |
| — | — | [m ³ /h] | Pa | A [mm] | B [mm] | H [mm] | D [mm] |
| 1 | LS/N/1 | 300 | 250 | 1100 | 410 | 310 | ø 160 |
| 2 | LS/N/2 | 500 | 250 | 1200 | 510 | 310 | ø 200 |
| 3 | LS/N/3 | 800 | 250 | 1200 | 560 | 380 | ø 250 |
| 4 | LS/N/4 | 1200 | 300 | 1300 | 710 | 380 | ø 315 |
| 5 | LS/N/5 | 1600 | 350 | 1400 | 710 | 480 | ø 400 |
| 6 | LS/N/6 | 2000 | 300 | 1400 | 900 | 500 | 750x415 |
| 7 | LS/N/7 | 2500 | 300 | 1400 | 900 | 500 | 750x415 |
| 8 | LS/N/8 | 3000 | 350 | 1600 | 900 | 660 | 750x550 |
| 9 | LS/N/9 | 3500 | 350 | 1600 | 940 | 700 | 800x550 |
| 10 | LS/N/10 | 4000 | 350 | 1600 | 940 | 700 | 800x550 |